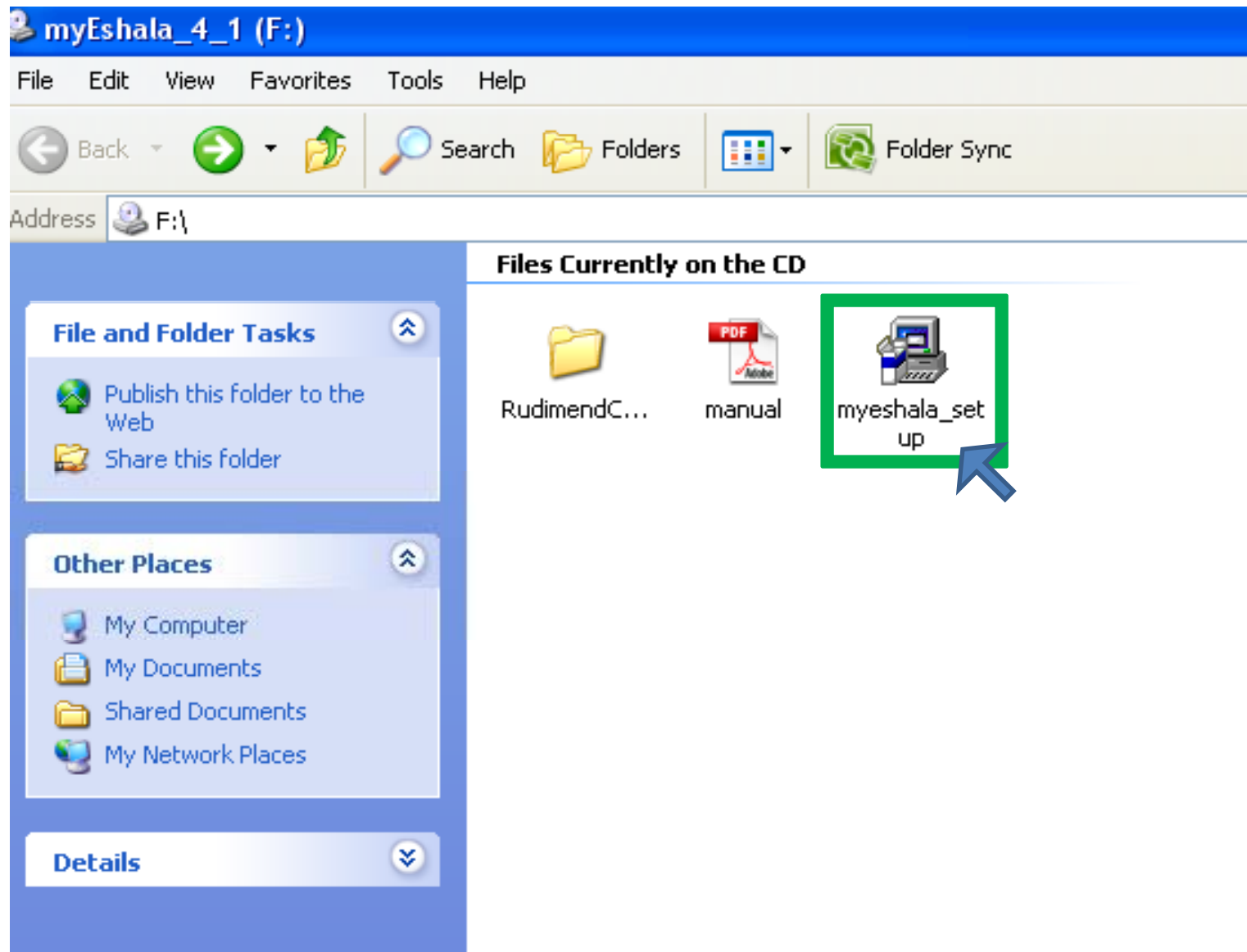


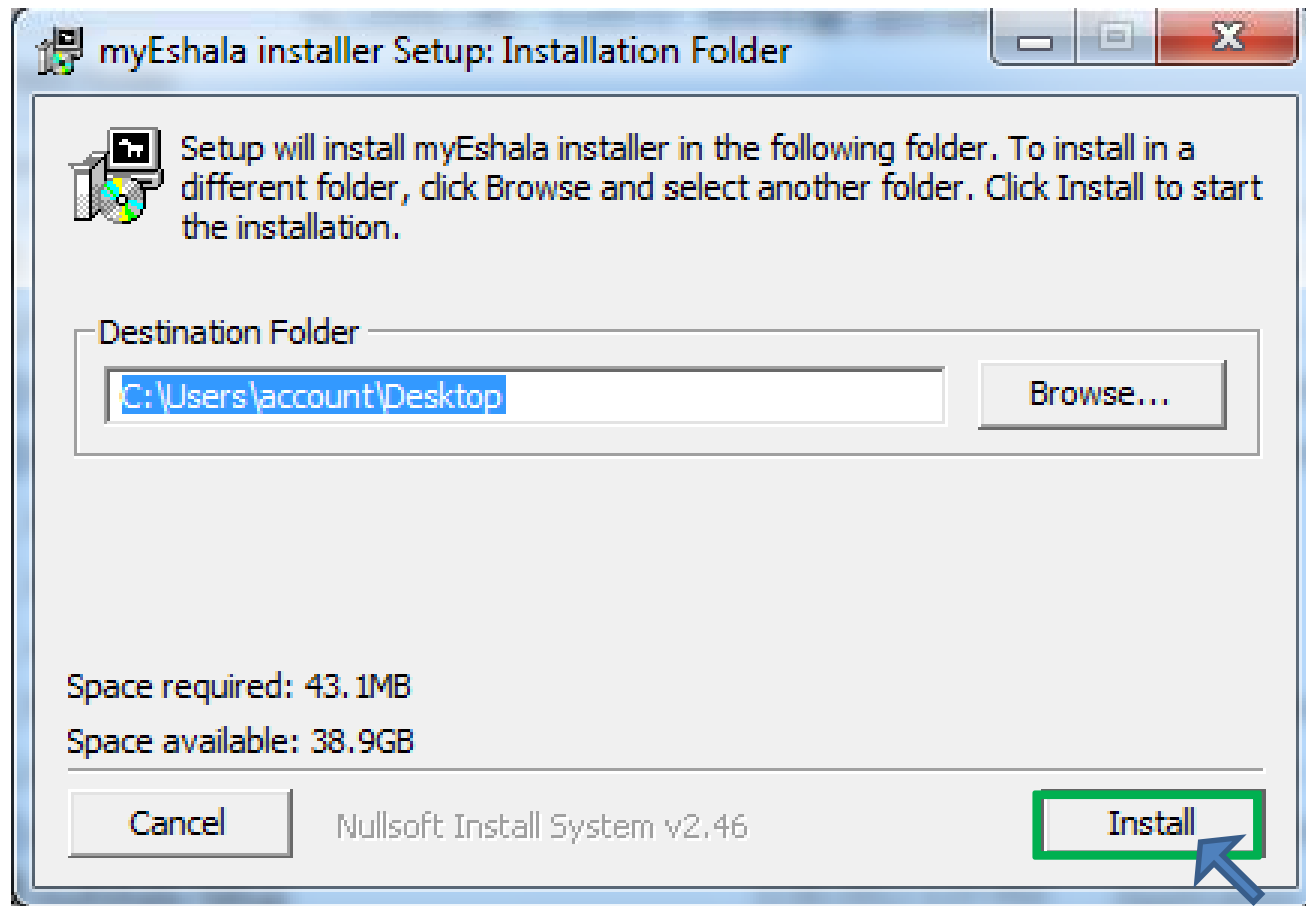
How to **install** myEshala DVD?

1. Start your system
2. Insert DVD-1 in DVD-ROM
3. Browse DVD on your system

Click on myshala_setup

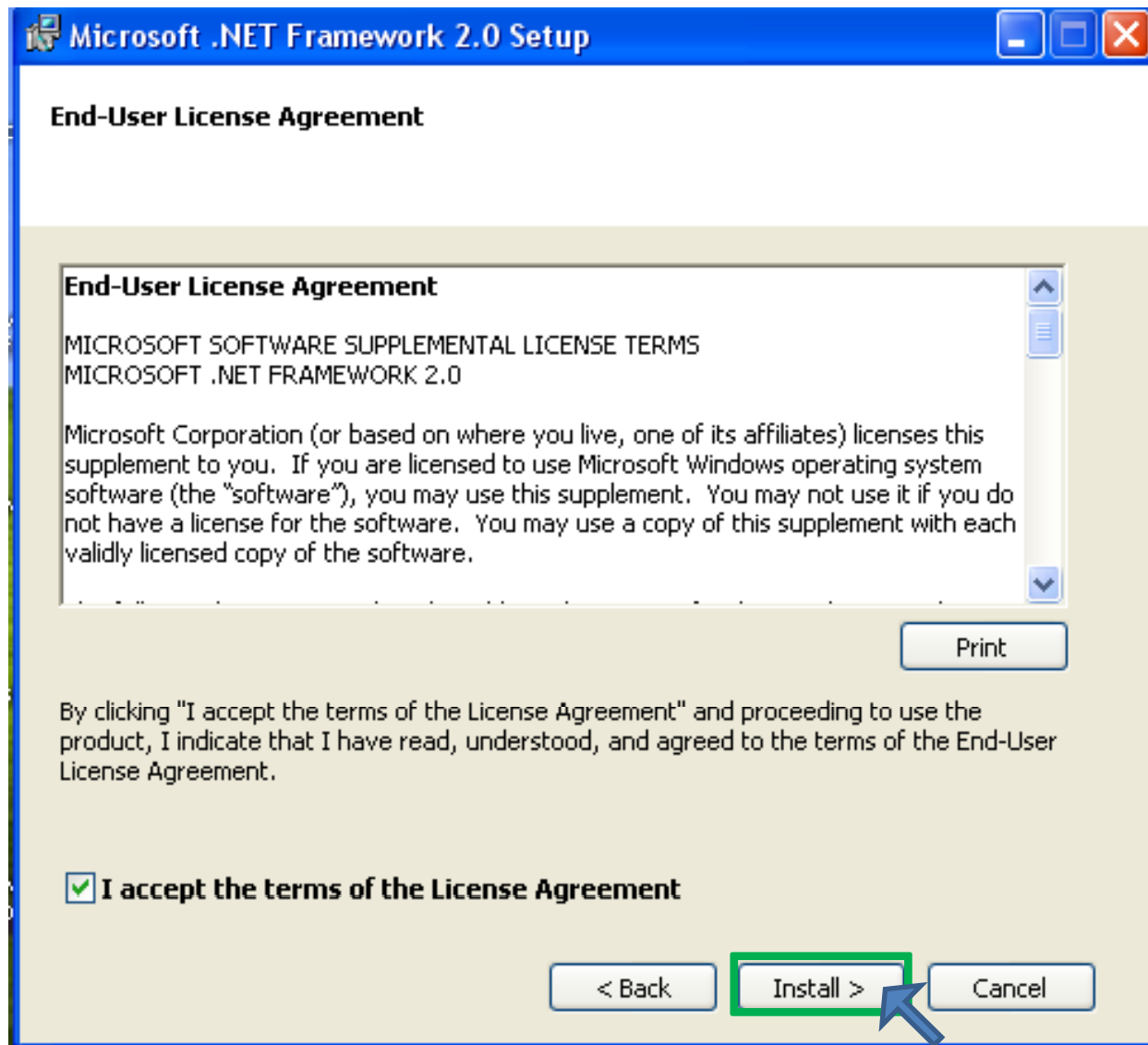


Click on Install Button

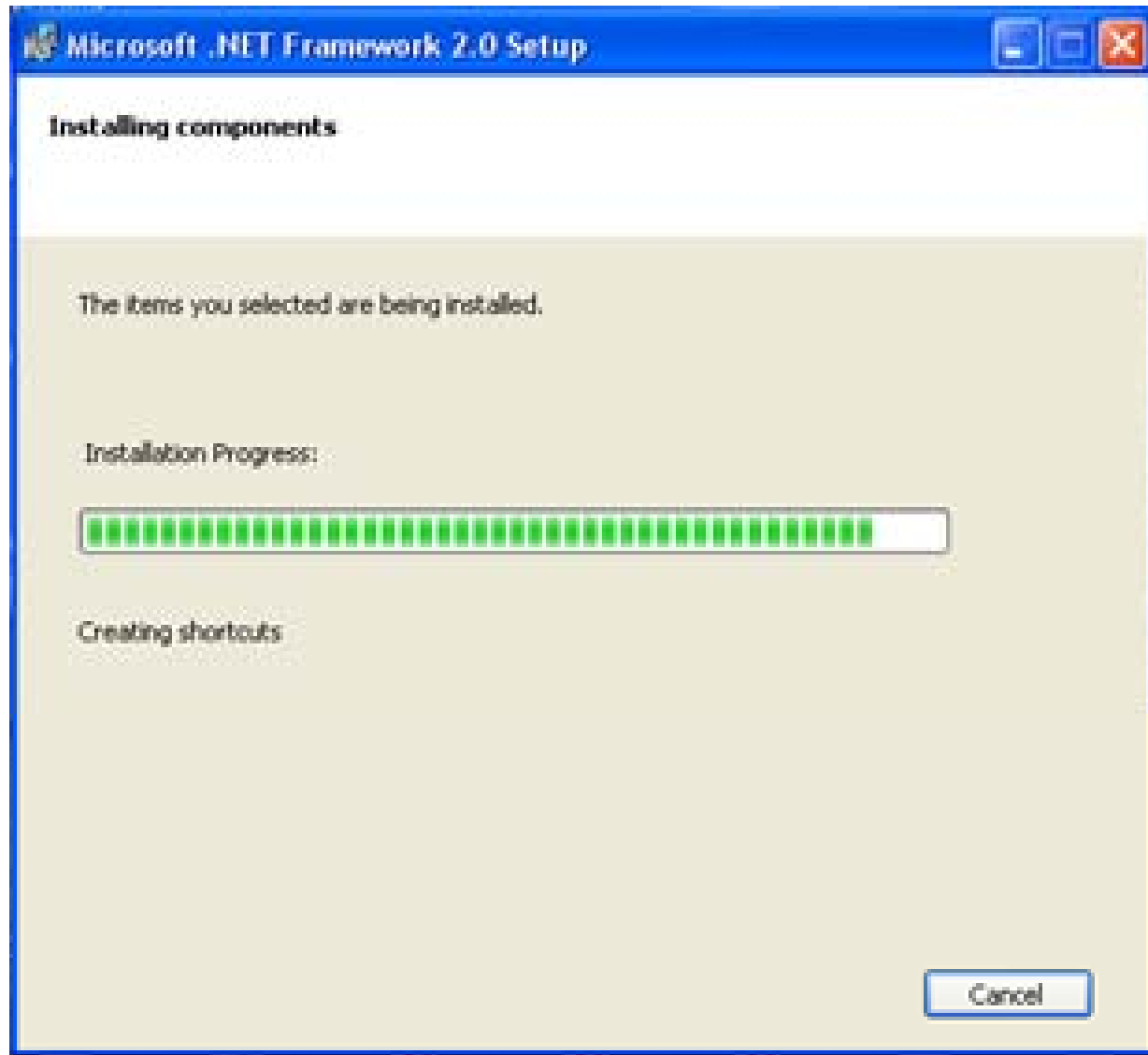


Microsoft.NET Framework Setup

Click I accept the terms of the license Agreement
then select install button

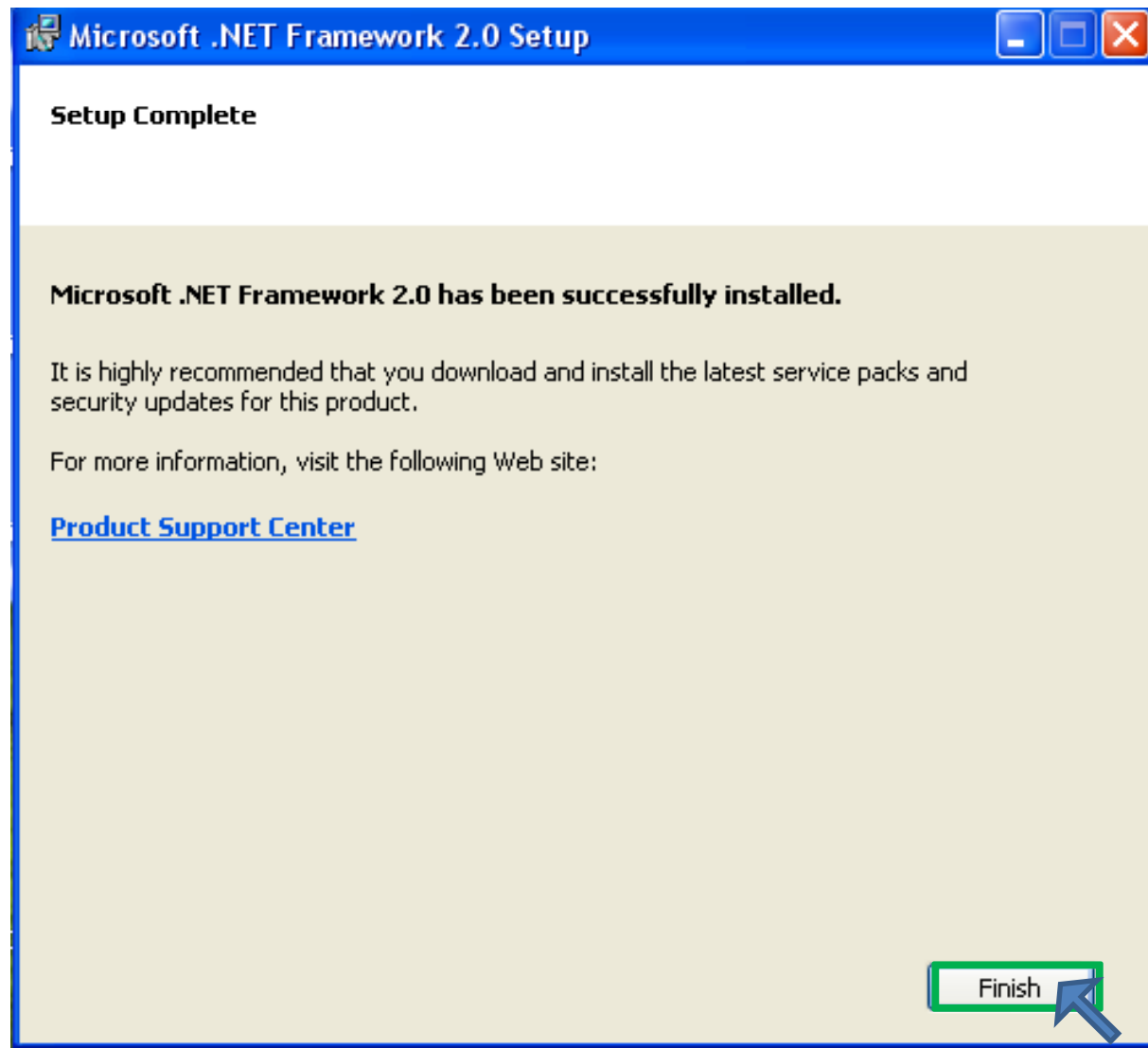


Microsoft.NET Framework Setup



Microsoft .NET Framework Setup

Click on Finish Button



myEshala installer Setup: Installing



Execute: C:\Documents and Settings\abc\Desktop\myEshala-Prerequisites\



```
Output folder: C:\Documents and Settings\abc\Desktop\myEshala-Prerequ...  
Extract: dotnetfx.exe... 100%  
Execute: C:\Documents and Settings\abc\Desktop\myEshala-Prerequisites...  
Extract: AdobeAIRInstaller-3-1.exe... 100%  
Execute: C:\Documents and Settings\abc\Desktop\myEshala-Prerequisites...
```

Cancel

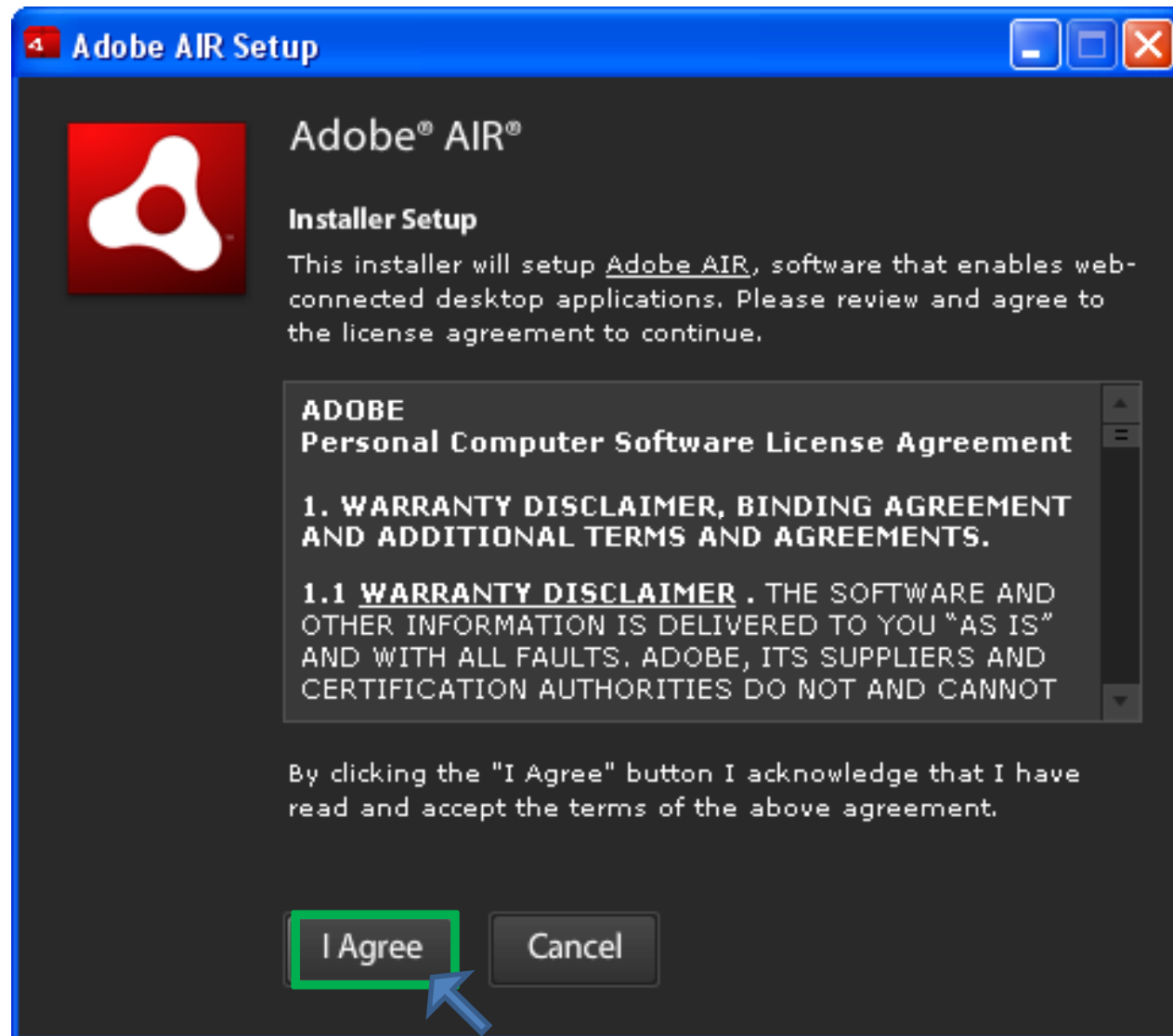
Nullsoft Install System v2.46

< Back

Close

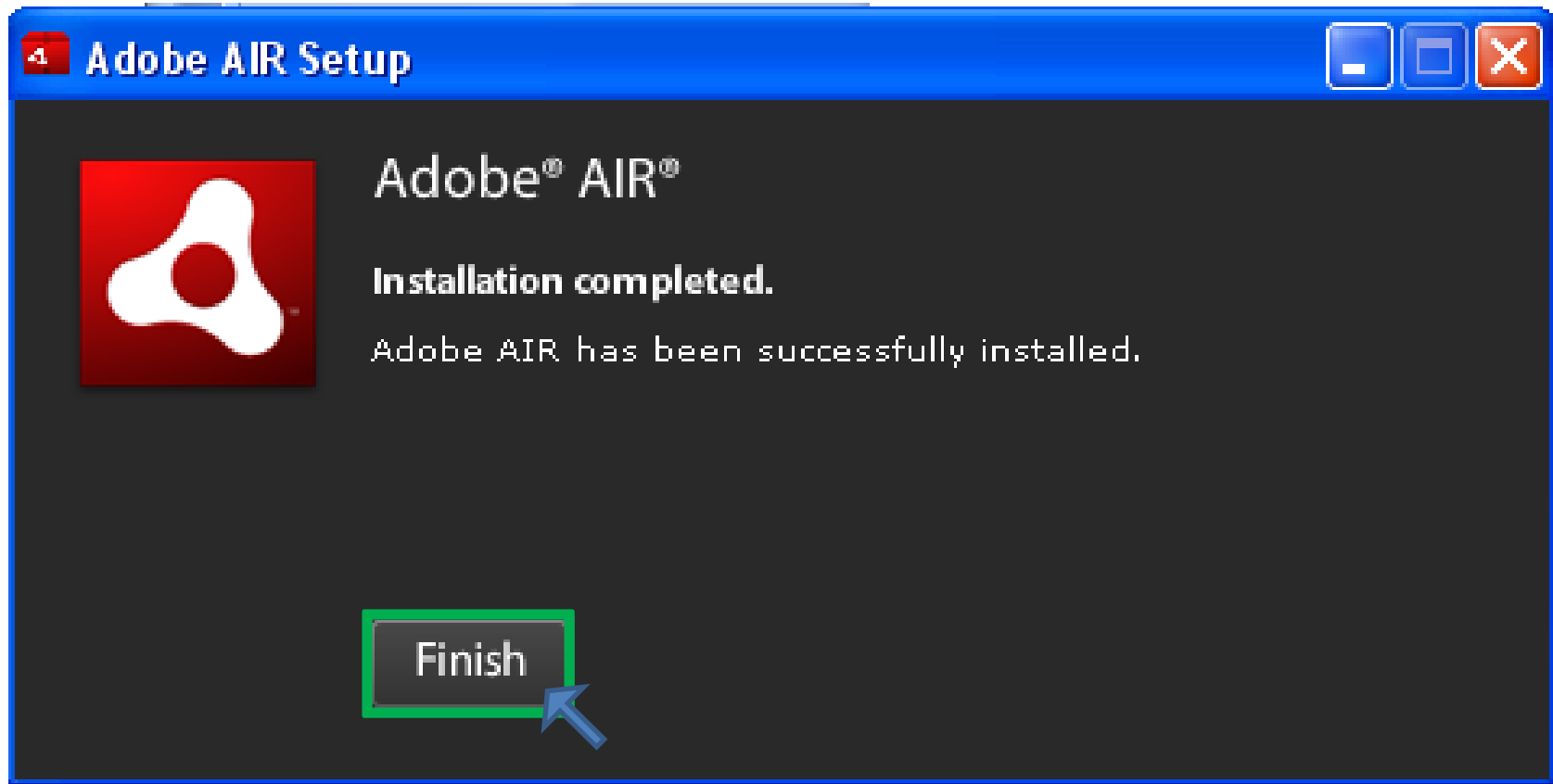
Adobe AIR Setup

Click on I Agree Button



Adobe AIR Setup

Click on Finish



Adobe AIR Updater

Click on Update Now



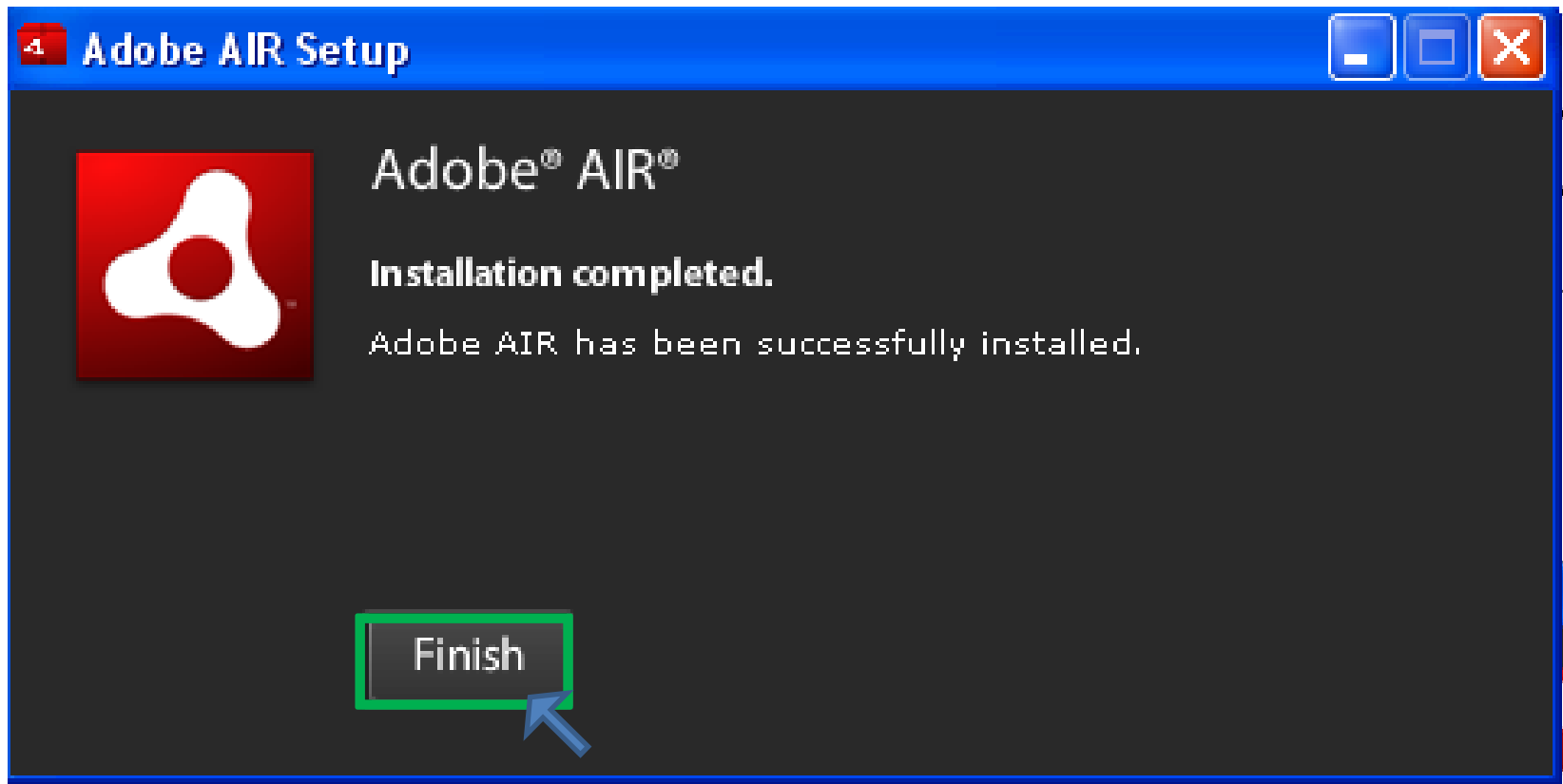
Adobe AIR Setup

Click on Update Button



Adobe AIR Setup

Click on Finish



In your system Adobe AIR Setup is already Installed then click on close Button





myEshala installer Setup: Installing



Execute: C:\Documents and Settings\abc\Desktop\myEshala-Prerequisites\c



```
Output folder: C:\Documents and Settings\abc\Desktop\myEshala-Prerequ...  
Extract: dotnetfx.exe... 100%  
Execute: C:\Documents and Settings\abc\Desktop\myEshala-Prerequisites...  
Extract: AdobeAIRInstaller-3-1.exe... 100%  
Execute: C:\Documents and Settings\abc\Desktop\myEshala-Prerequisites...  
Extract: clientAir.exe... 100%  
Execute: C:\Documents and Settings\abc\Desktop\myEshala-Prerequisites...
```

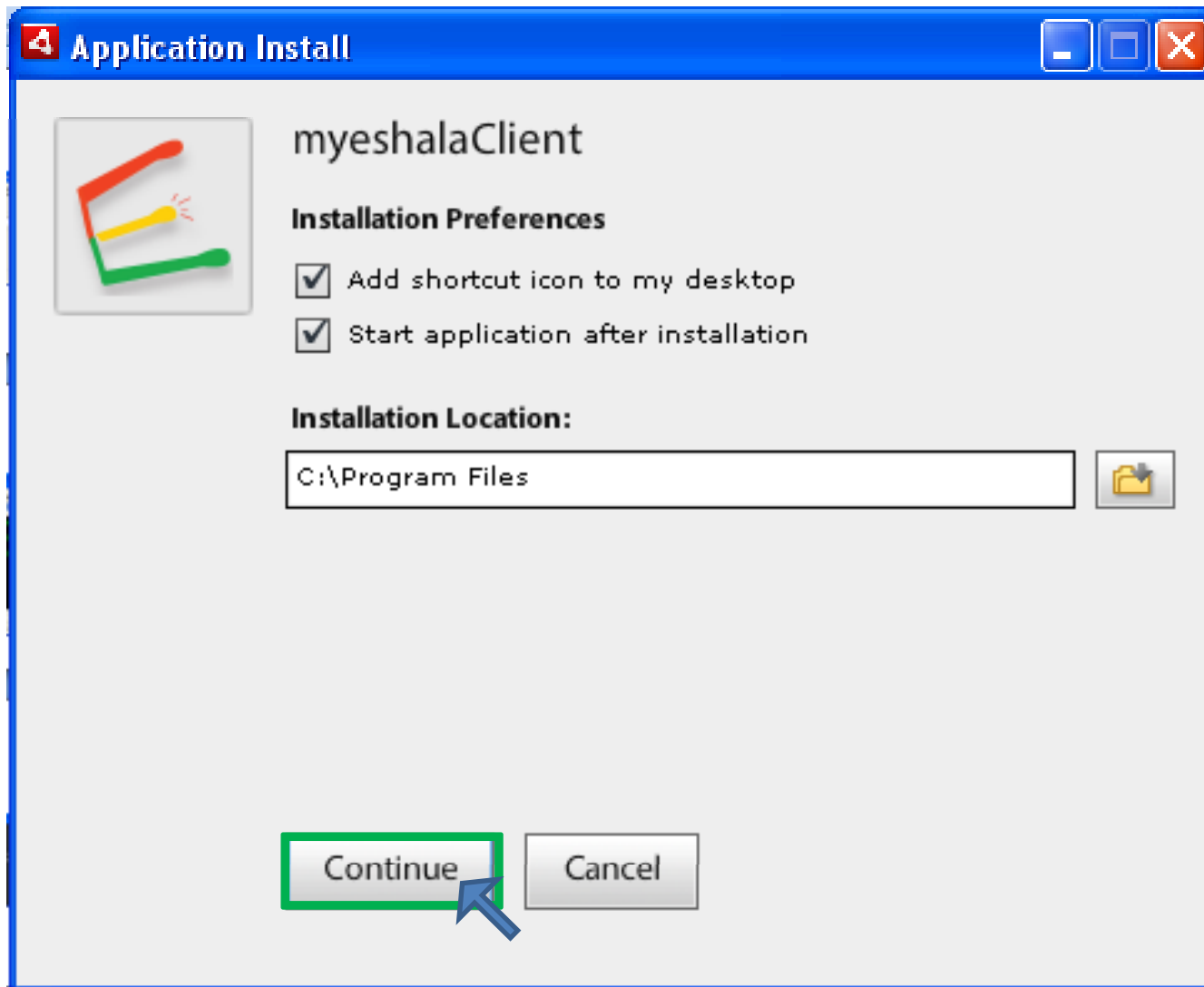
Cancel

Nullsoft Install System v2.16

< Back

Close

Click on the Continue Button

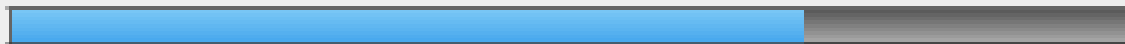


 Application Install



myeshalaClient

Installing application ...



Cancel

my  shala[®]

Now all minds are bright!

 **Netvidya**
a scientific approach to learning

I have a serial keyDeactivateLogin

Go Online