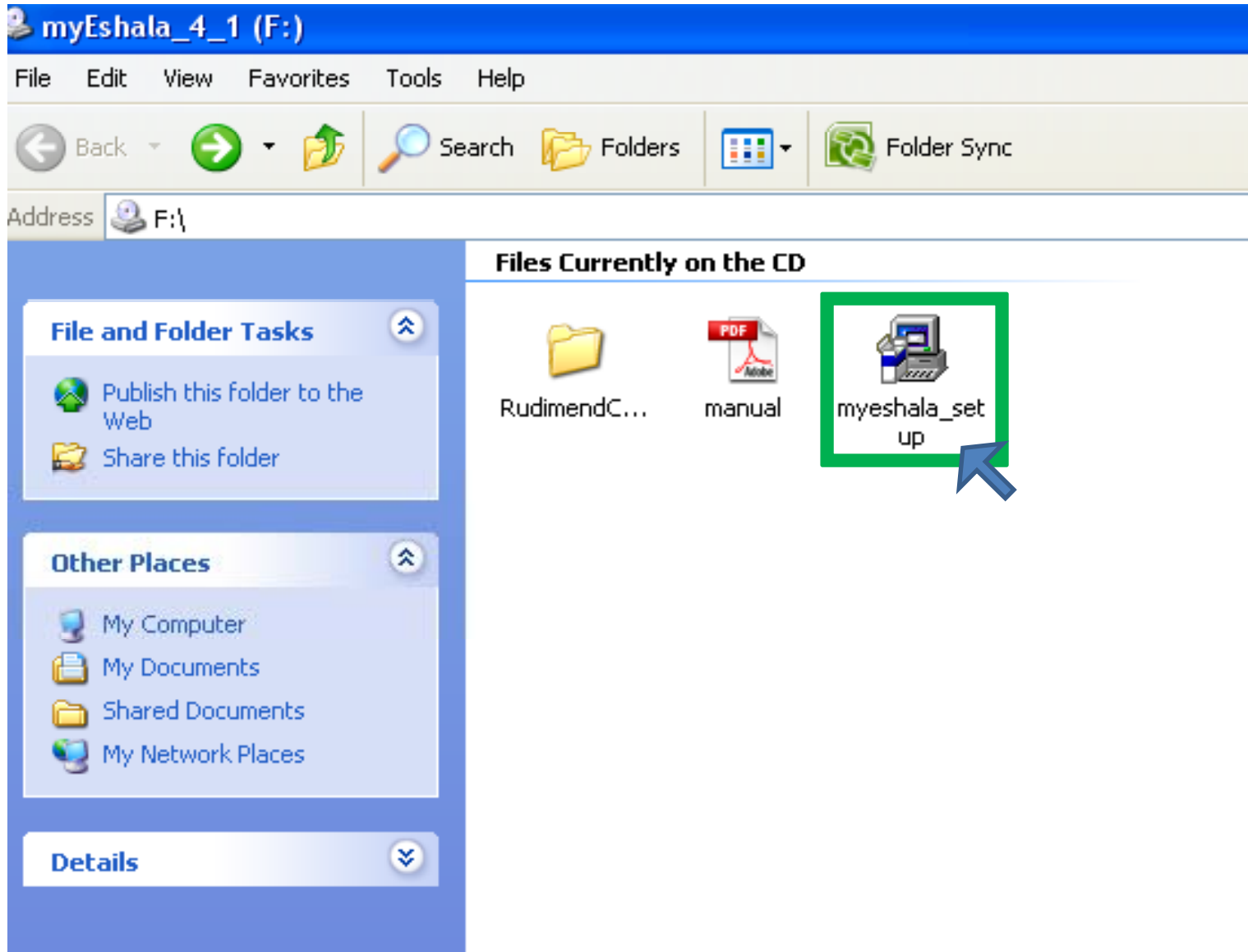


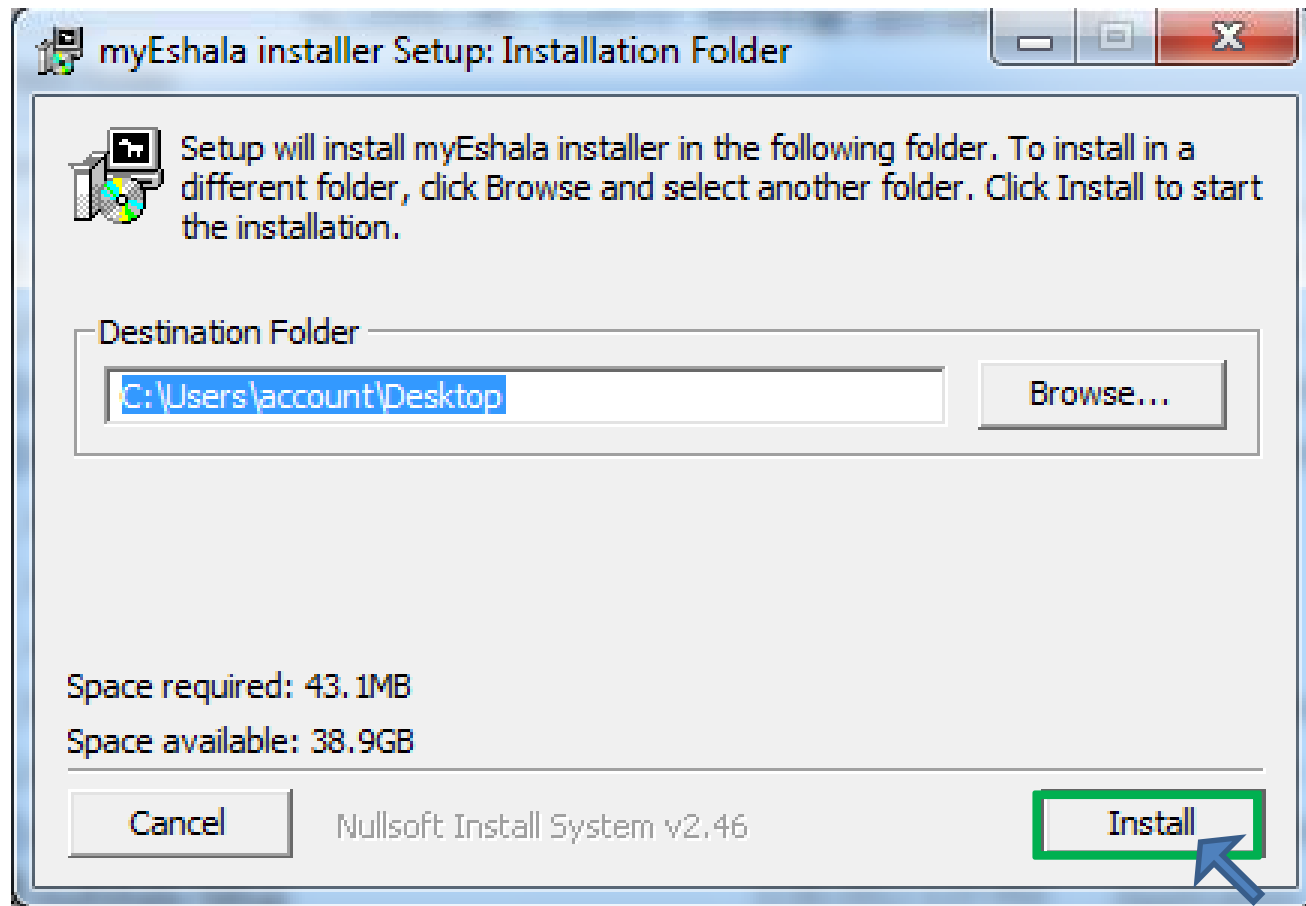
How to **install** myEshala DVD?

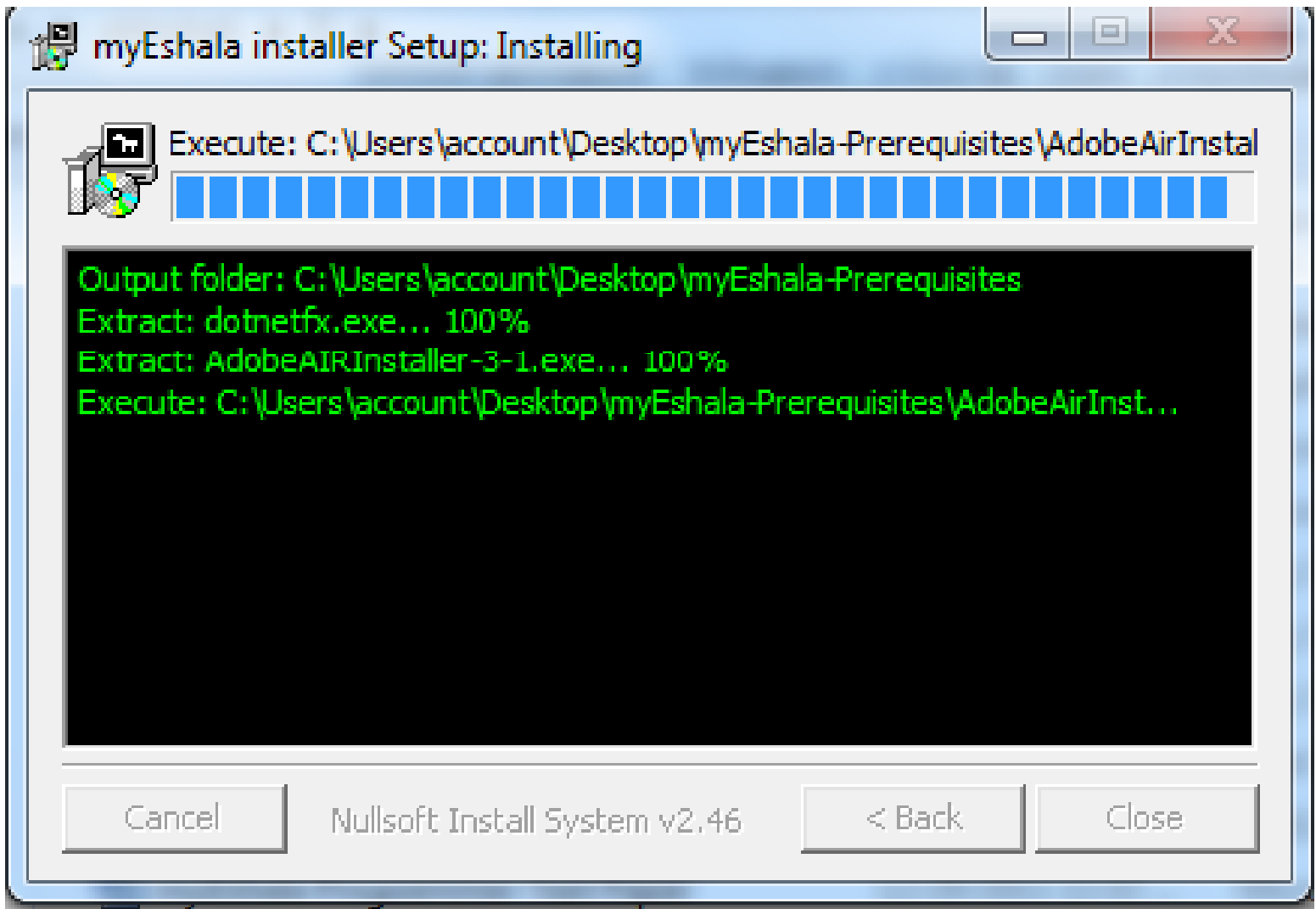
1. Start your system
2. Insert DVD-1 in DVD-ROM
3. Browse DVD on your system

Click on myshala_setup



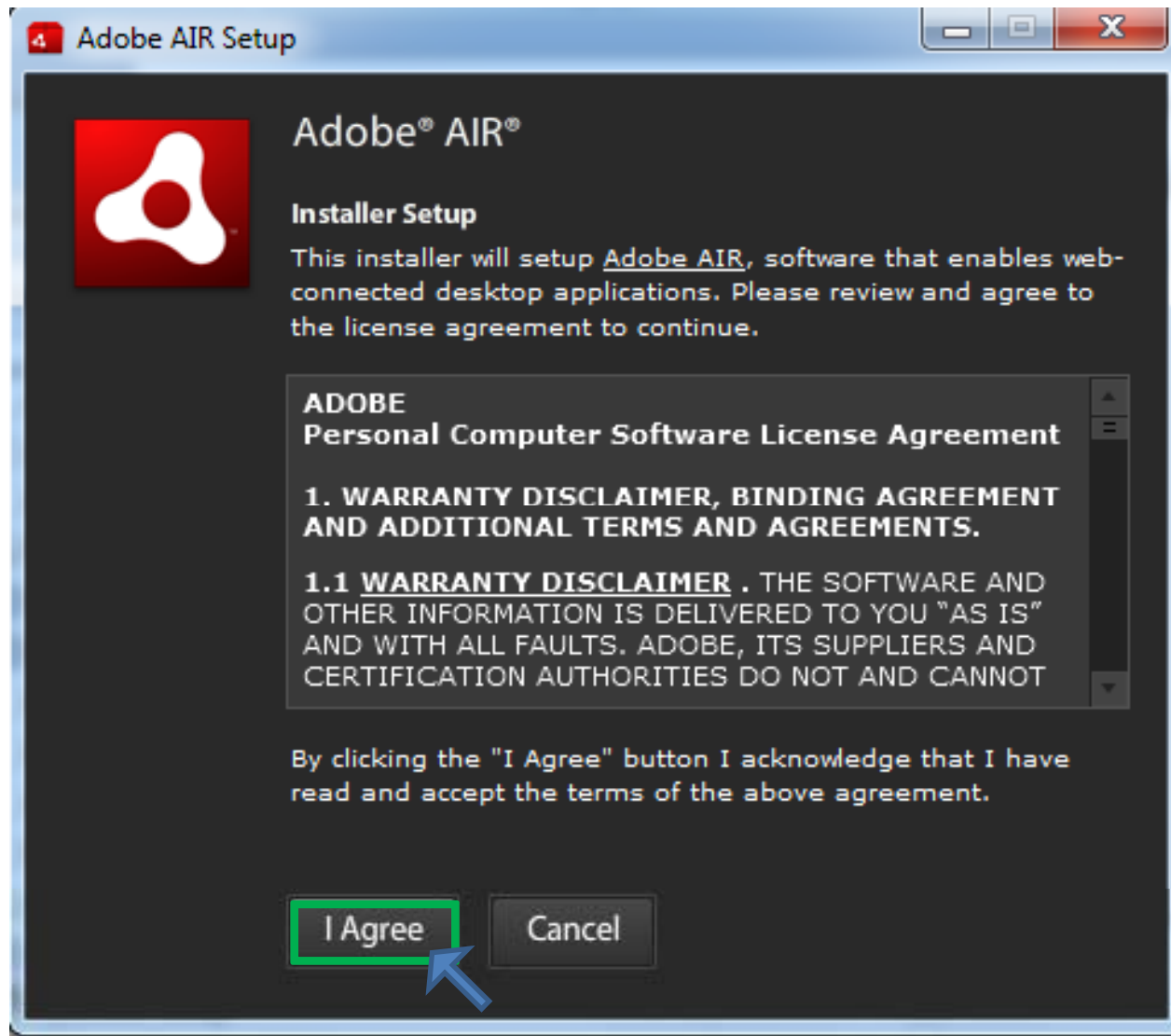
Click on Install Button





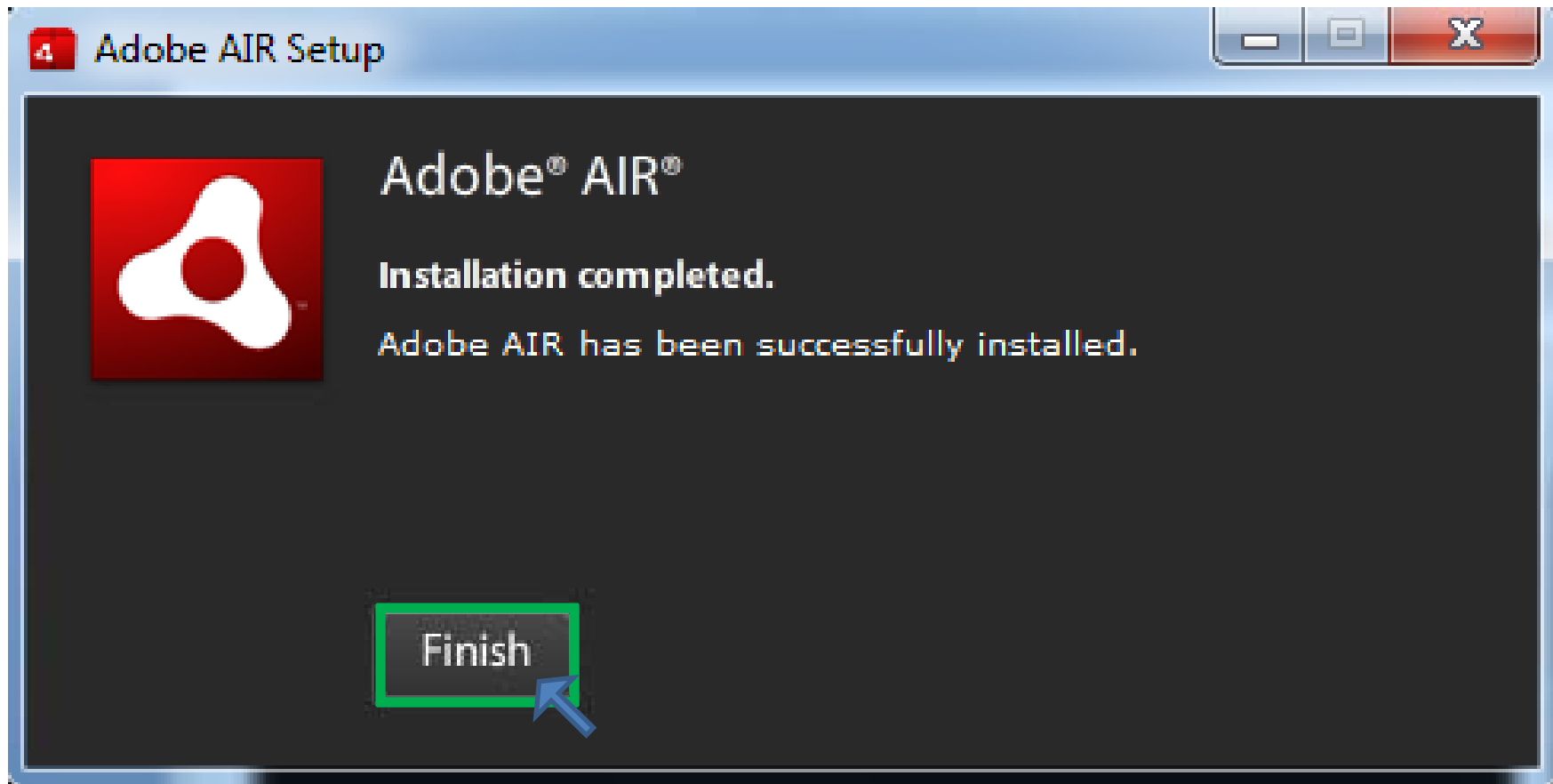
Adobe AIR Setup

Click on I Agree Button



Adobe AIR Setup

Click on Finish



In your system Adobe AIR Setup is already Installed then click on close Button





myEshala installer Setup: Installing



Execute: C:\Users\account\Desktop\myEshala-Prerequisites\clientAir.exe



```
Output folder: C:\Users\account\Desktop\myEshala-Prerequisites
Extract: dotnetfx.exe... 100%
Extract: AdobeAIRInstaller-3-1.exe... 100%
Execute: C:\Users\account\Desktop\myEshala-Prerequisites\AdobeAirInst...
Extract: clientAir.exe... 100%
Execute: C:\Users\account\Desktop\myEshala-Prerequisites\clientAir.exe
```

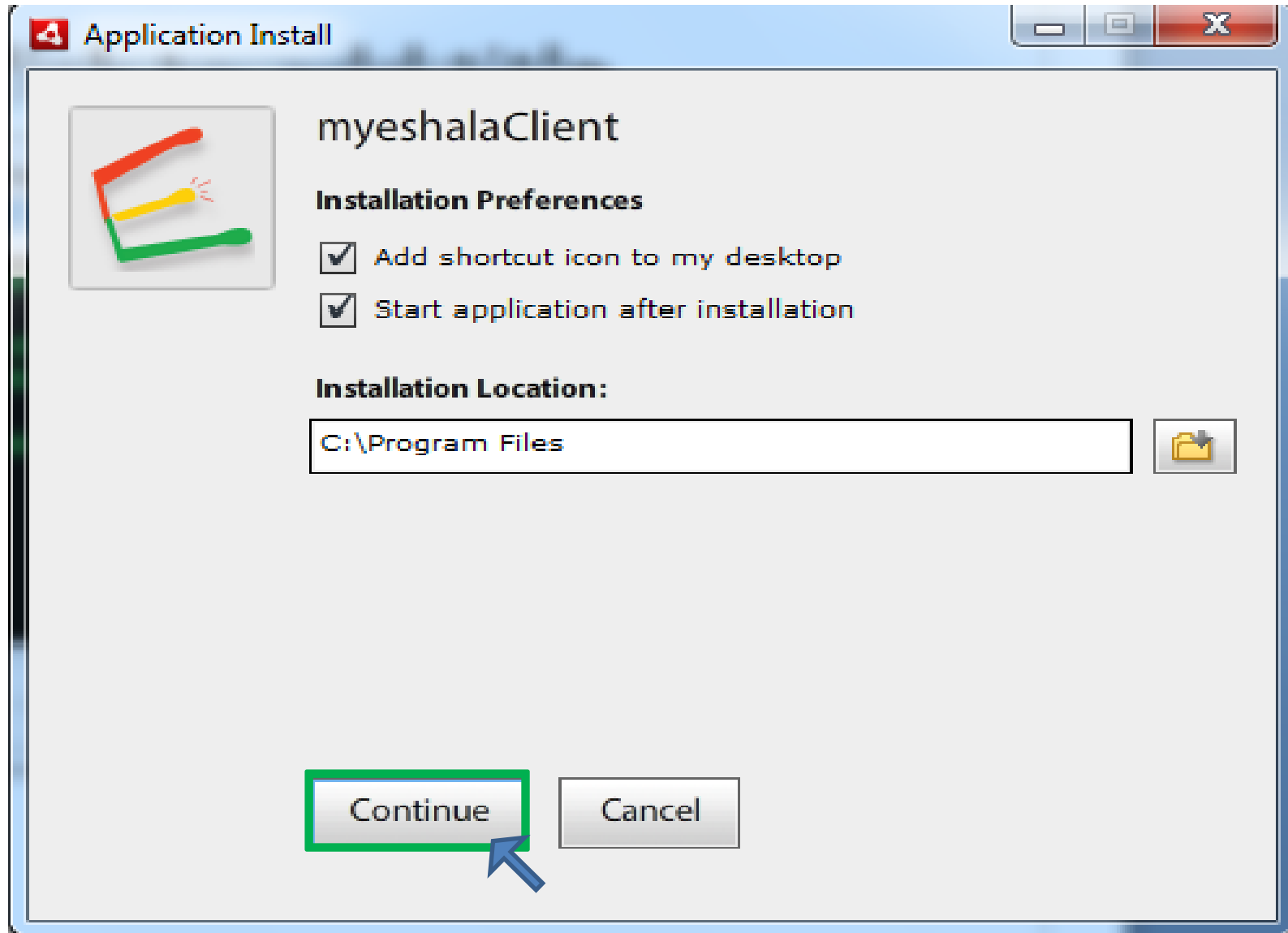
Cancel

Nullsoft Install System v2.46

< Back

Close

Click on the Continue Button



 Application Install



myeshalaClient

Installing application ...

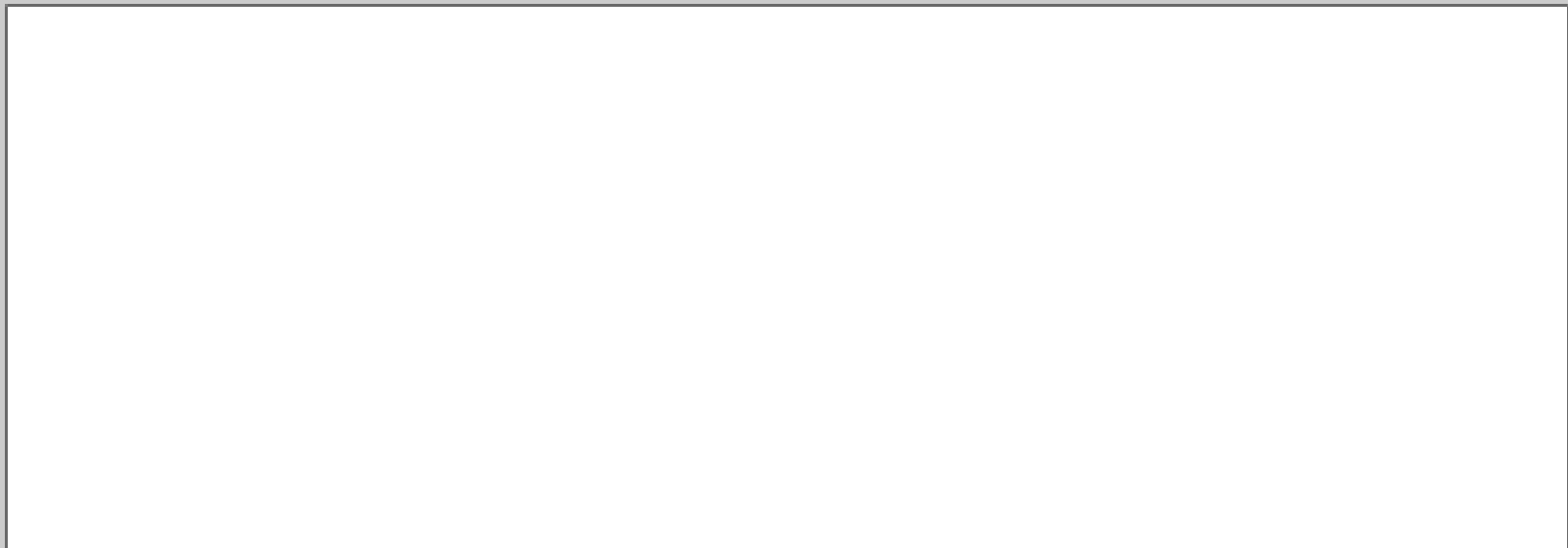


Cancel

my  shala®

Now all minds are bright!

 **Netvidya**
a scientific approach to learning



[I have a serial key](#)

[Deactivate](#)

[Login](#)

[Go Online](#)